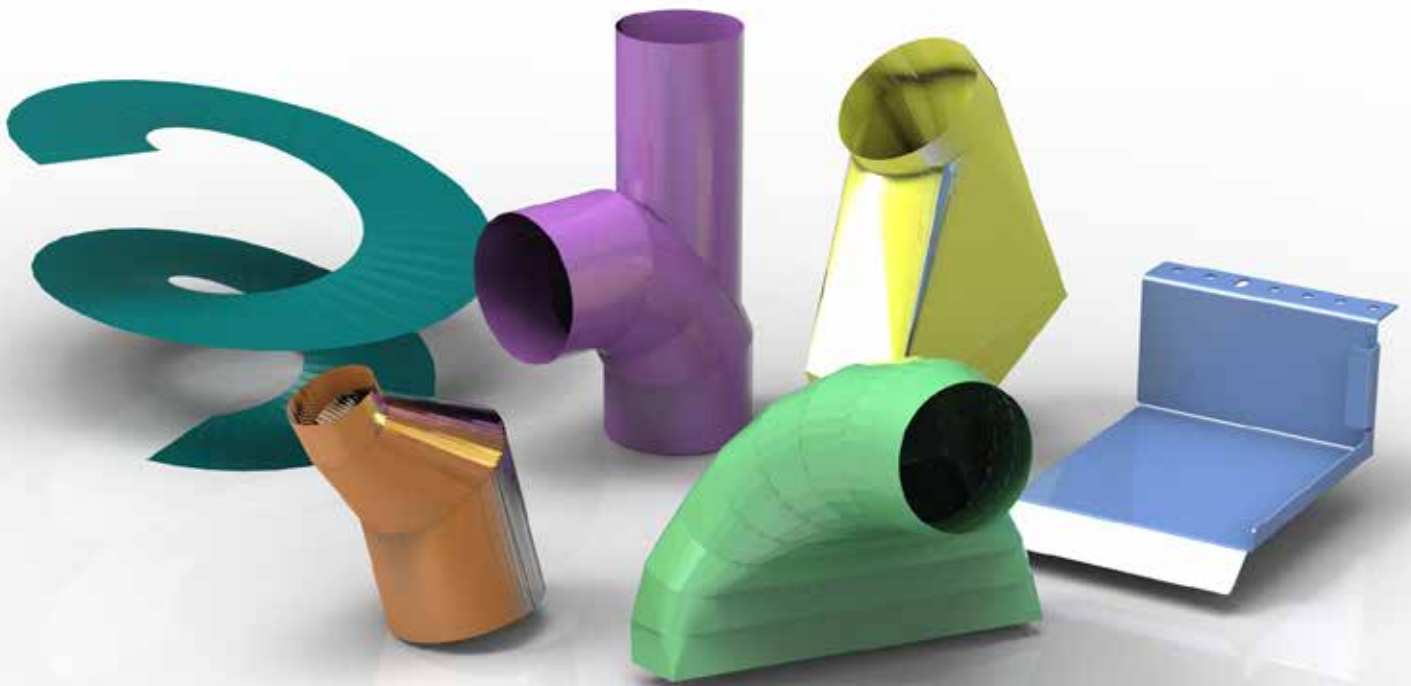




LogiTRACE



UNFOLDING SOFTWARE for
3DUNFOLDCAD
PIPING, DUCTING, ENGINEERING



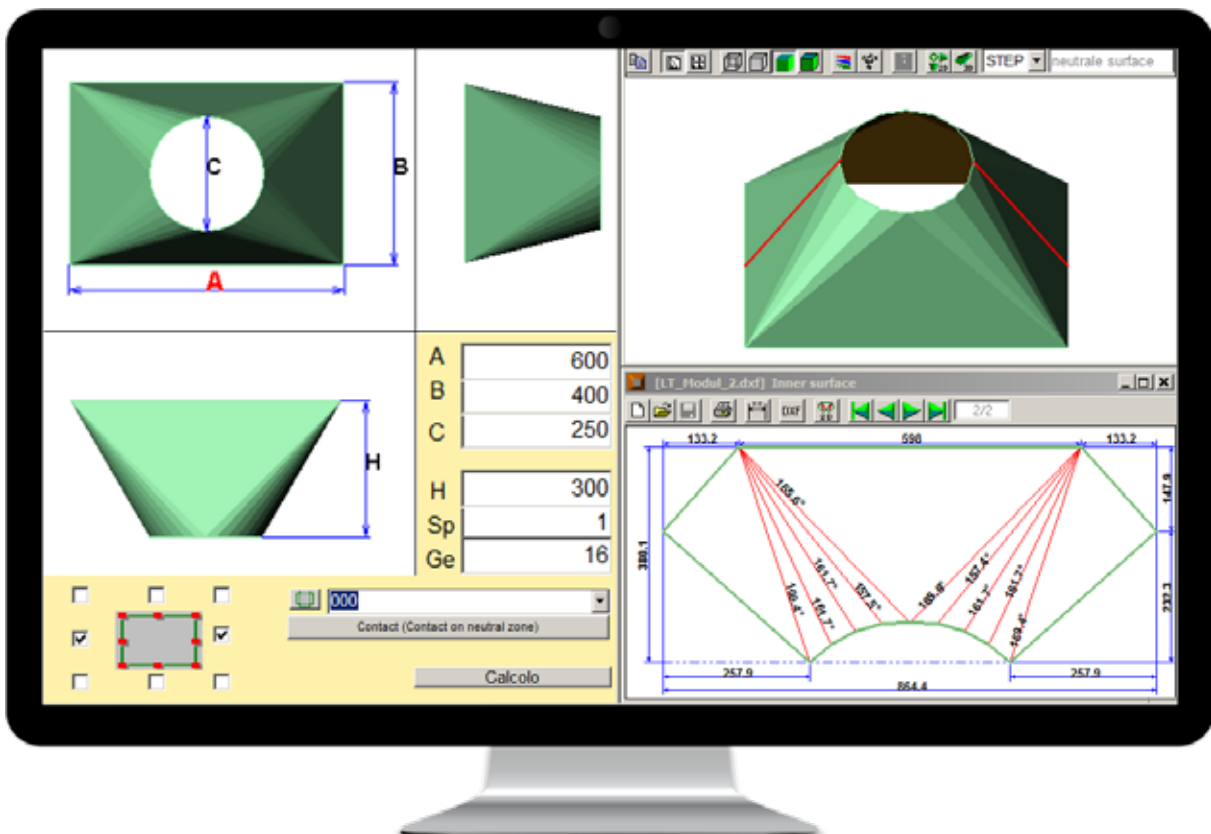
LOGITRACE
SIMPLE - BRILLIANT - MODULAR



Library of parametric forms

The main features of LogiTRACE are :

- calculates unfolding of parametric parts by entering simple dimensions
- avoids errors due to clear 3D preview of the part
- new parts can be made using the expert modules
- bend lines are dimensioned and can be marked
- contact type and big thickness are well treated
- automatic seams, common-cut, rolling tags
- DXF optimized both for cutting and printing
- user interface is quick to learn and easy to use
- no training course needed
- 3D construction, import/export of STEP files
- excellent also for customers marking out parts manually



Unfold complex forms in 3 simple steps

From selecting the part to unfolded DXF in less than a minute:

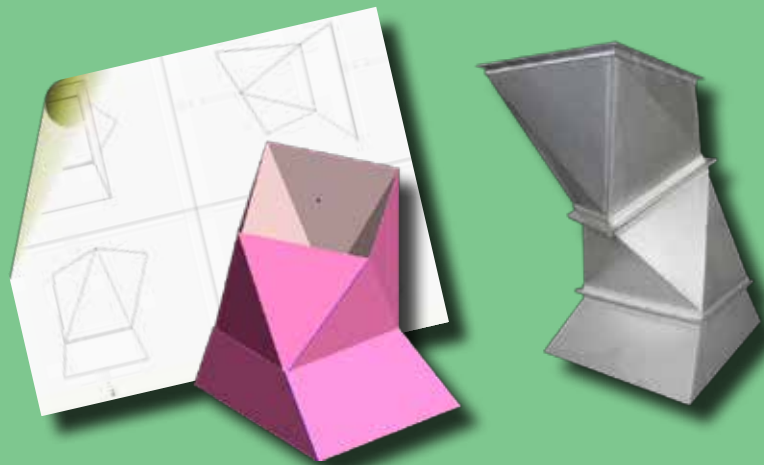
- select the part from the library of over 200 parametric parts
- enter dimensions, thickness, number of folds, number welds or parts needed
- check 3D preview, print unfolding 1:1 if required, save the unfolding as DXF with bend angles

SAVE TIME AND AVOID MISTAKES

From the idea, via 3D model to a finished part

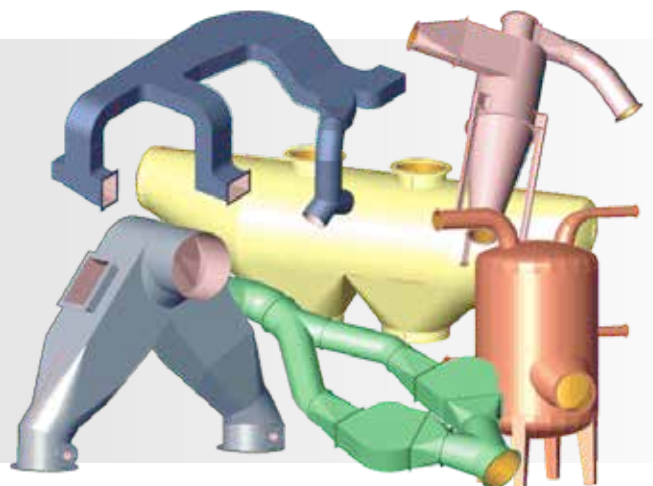
Avoid expensive mistakes by quickly checking the 3D model of the part. Save time and avoid wasting material. Export the 3D-model in STEP, IGES, STL or DXF format to import into other 3D-CAD programs.

GET IT RIGHT FIRST TIME!



Use expert modules to create special parts

- combine simple parts and calculate their intersection
- make special transitions between any 2 sections that can be defined even using DXF files
- make parts with rotational symmetry such as special segment bends, segmented insulating caps
- convert any DXF file into a 3D profile
- create a piping lines just by entering diameter and coordinates the possibilities are endless



Complete LIBRARY of more than 200 parametric parts

Starter kit can be activated immediately after placing your order to get you up and running really quickly. Order other kits as and when you need them. Use workstation, USB or server licensing.



Thickness counts, we help you get it right!

Use advanced treatment of material thickness. Calculate intersection of pipes as penetrating or on-top. Select how thickness of parts affects the height of the transition. Work in inches if required.



USE LOGITRACE TO MARK OUT PARTS MANUALLY with paper templates 1 to 1 or dimensioned drawings

- DXF output can be setup exactly as you need
- choose dimensioning, bend angles, setup notches or marking to mark bends
- store special setups for seams, overlaps, notches, marking, riveting
- excellent treatment for special parts like segment bends, common-cut and rolling taps to attach parts

3D-Unfold to design, import and unfold

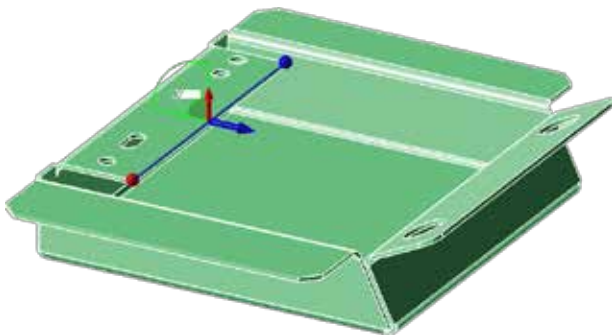


LogiTRACE 3D-Unfold allows you to design simple sheet metal parts or import assemblies of parts then to select and unfold them. It is really quick to learn and easy to use with the following main features:

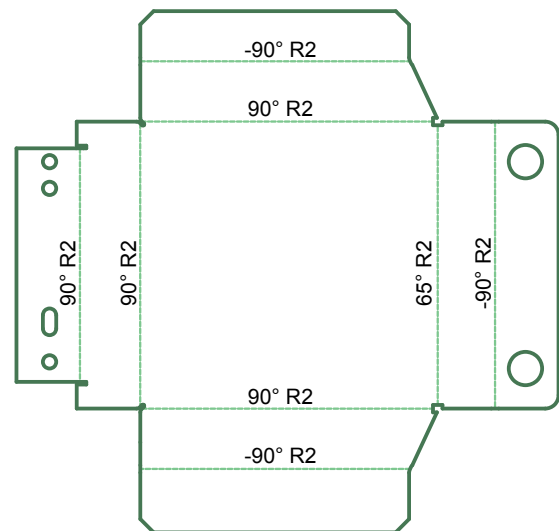
- make parts in simple box mode by pulling up the edges as required
- draw or import the profile of a part, define its width and it's ready
- edit parts by adding holes, notches, rounding or editing edges
- import DXF files to make artistic 3D parts
- import parts or assemblies in STEP/IGES format and unfold them according to your available tooling

LogiTRACE 3D-Unfold is specially designed for simple sheet metal parts or importing parts/assemblies from customer files. You can unfold them, according to your bending tools. The module can also be used in PROfirst CAD/CAM and PROfirst quotation module.

3D-MODEL STEP OR IGES



Using drag and drop it is really easy to make a part like the one shown simply by clicking on the edge and pulling it to the desired position. Check out our videos on the web.



UNFOLDING

CAD / CAM SOFTWARE for sheet metal

