

# New features PROfirst V10.5



## *PROfirst CAD / CAM / CALCULATION Version 10.5*

### ***Windows 10 / 7 compatible***

New PC or new windows version? Only by keeping your software updated to the current version can you be sure to avoid problems and to keep your PC running quickly. PROfirst CAD V10.5 is specially developed and tested for Windows 10.

### ***AutoCAD© 2018 compatible***

AutoCAD© 2018 have completely changed the format of their DXF and DWG files. PROfirst Version 10.5 has a special new module enabling you to read this new format.

### ***CAM: Machine programmable micro-joints for Trumpf and Bystronic machines***

Trumpf and Bystronic machines have a special function to allow the size of the micro-joint to be adjusted directly on the machine control. PROfirst can now be set to output this type of micro-joint.

### ***CAM: Output of complete Trumpf production plan saves time for machine operators***

Complete production plans can be output for Trumpf laser machines. The machine operator can read in a single file which includes all programs and quantities for the job. All necessary information for STOPA automatic sheet stores can also be output.

### ***CAM: Approximate cutting time output to post processor***

The approximate cutting time can be output in the NC Program. This is used by Trumpf and other machines.

### ***CAM: Improvement importing parts in DSTV format with tapping and sinking***

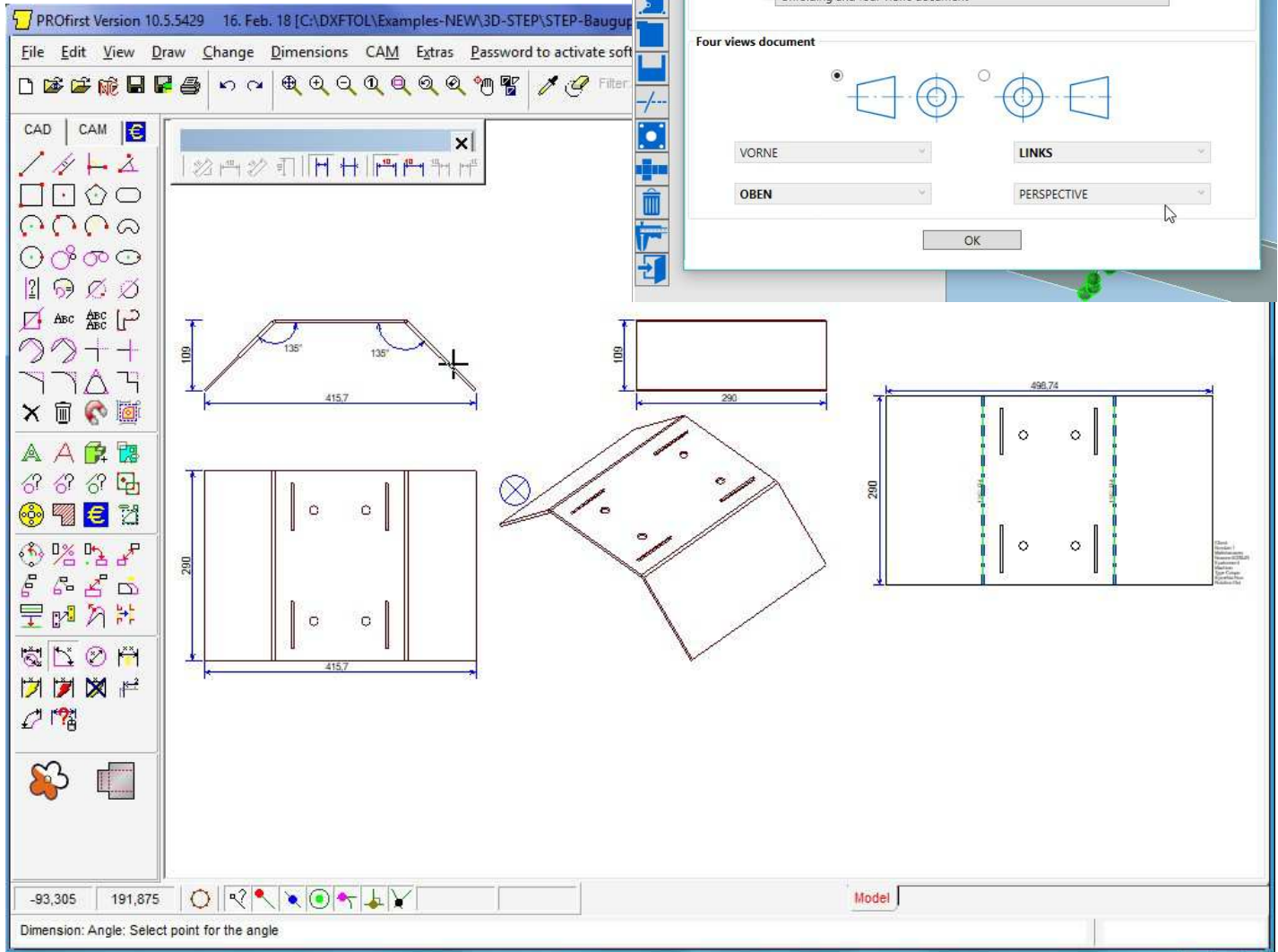
Tapping and sinking are now correctly recognised when importing parts in DSTV format.

### ***CAM: Barcode on sheet plan can be set to program name or nesting number***

This can be very useful for booking cut sheets into ERP software.

### 3D-STEP Unfold: automatically generates 4-views of a bending part from a step file

PROfirst 3D-STEP Unfold can now generate automatically 4 views of a sheet metal part from a single step file. The views are automatically dimensioned and are perfect for the operator of the bending machine.



### Unfold several STEP files at the same time

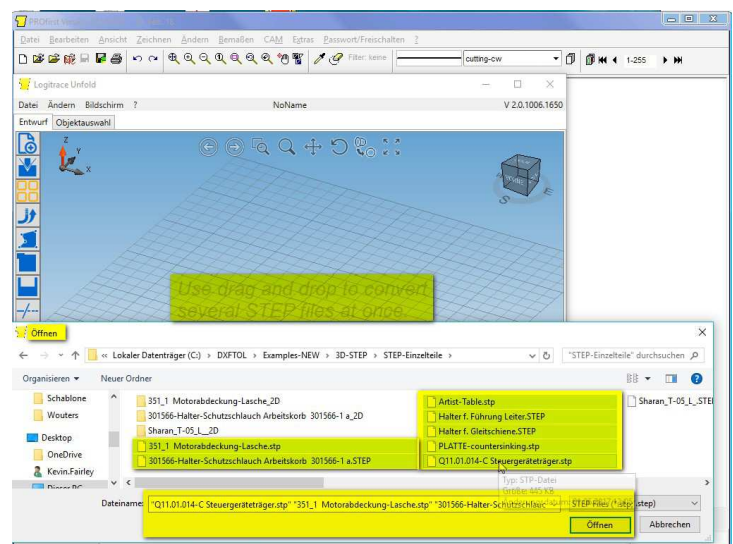
3D-STEP Unfold module can now unfold several step files automatically at the same time using either Drag und Drop or open several files.

### Material type can be set in PROfirst 3D-Unfold

Material type can be set directly in PROfirst 3D-STEP Unfold meaning that files can then be automatically imported with all information.

### Database of bending tools can be stored on the server

Then all users can use the same bending tools and correction factors.



### CALC: Operation bending can automatically adjust the number of preparation steps according to the number of bends

A part with more bends usually needs more preparation time. With a simple setting you can set as of how many bends we increase automatically the number of the number of preparation steps. This simple setting makes the automatic calculation of bending time even closer to the reality.

**Description of operation**  
 Article N° 3 Article Name BENDING Article Text Bending Define long text

**Choose a type of operation**  
 Free  Cutting  Drilling  Counter sink  Tapping  Drawing  Bending  Nibbling  Combi punching machine  Products

**Number of preparation steps**  
 Always one prep. step  Bends per prep. step 3

**You can associate another operation to this operation automatically**  
 Choose linked operation

**Choose a type of operation**  
 Calculate a cost (ex:external work)  
 Calculate time and cost (ex:internal operations)

**Choose how to work out the time and cost**  
 Using formulas  With a list of values  With a list of ranges  
 Automatic selection using list of values

**List values : Time in hours:minutes:seconds:hundredths**  
 Enter messages when entering the operation Preparation steps of time in min Length time is multiplied by number (time quantity).  
 Select type of bend Numbers of bends or part time in (sec) PFD=Weight (t.n) Maximum(PFE,PFF)

	Description	Setup time	Time quantity	Time length	PFD < To	AND/OR	Max < To	TH prep.	TH prod.
1	Simple	00:05:00.00	00:00:15.00	00:00:00.00	5	AND	750	Bending Standard	ending Standard
2	Medium	00:10:00.00	00:00:30.00	00:00:00.00	10	AND	1500	Bending Standard	ending Standard
3	Heavy	00:15:00.00	00:01:00.00	00:00:00.00	20	AND	1500	Bending large	Bending large
4	2 man	00:20:00.00	00:01:30.00	00:00:00.00	60	AND	4000	Bending 2 men	Bending 2 men
5	2 man with crane	00:30:00.00	00:02:00.00	00:00:00.00	20000	AND	12000	Bending 2 men	Bending 2 men
6	Enter time directly in min.	00:01:00.00	00:01:00.00	00:00:00.00	20000	AND	12000	Bending large	Bending large

### CALC: Operation programming can now be set to be adjusted automatically between simple/medium/complicated depending on the size of the drawing or number of bends

Programming cost is normally set to "simple". Now according to the number of drawing elements or the number of bends PROfirst adjusts it automatically between simple/medium/complicated.

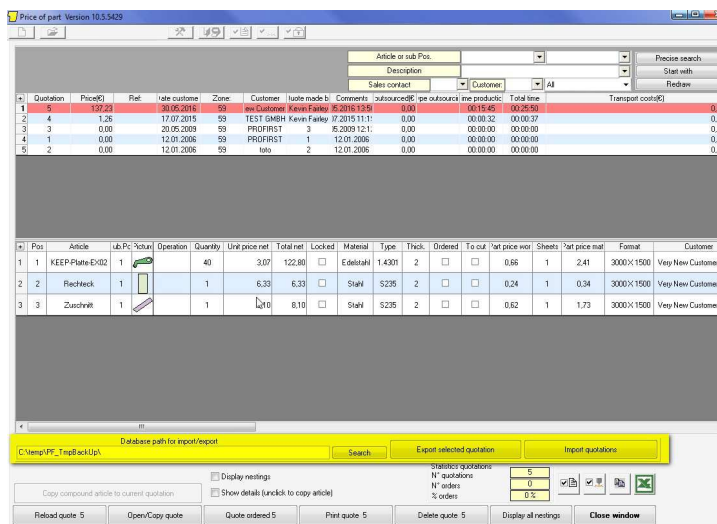
Calculate time and cost (ex:internal operations)  Automatic selection using list of values

**List values : Time in hours:minutes:seconds:hundredths**  
 Enter messages when entering the operation Length time is multiplied by number (time quantity).  
 Type of programming No drawing element: Number of folds

	Description	Setup time	Time quantity	Time length	No < To	AND/OR	Num < To	TH prep.	TH prod.
1	Simple	00:05:00.00	00:00:00.00	00:00:00.00	20	AND	0	Office	Office
2	Medium	00:10:00.00	00:00:00.00	00:00:00.00	100	AND	2	Office	Office
3	Complicated	00:30:00.00	00:00:00.00	00:00:00.00	500	AND	4	Office	Office
4	no programming costs	00:00:00.00	00:00:00.00	00:00:00.00	-5	AND	-1	Office	Office

### CALC: Import and export of quotations from main database to another database

You can select quotations and easily export them from the current database into another separate access database. This is ideal for sales staff using a notebook on a customer's premises or in a home or regional office.



Price of part: Version 10.5.9429

Quotation	Price(€)	Ref.	Date customer	Zone	Customer	Issue mode b.	Comments	outsourced(€)	ipe outsourced	line production	Total time	Transport cost(€)
1	1392.23		20.05.2009	99	TEST	1		0.00			00:05:46	00:00:00
2	4		12.07.2009	99	TEST	1		0.00			00:00:32	00:00:37
3	3		20.05.2009	99	PROFIRST	3	6.2009.12.1	0.00			00:00:00	00:00:00
4	1		12.07.2008	99	PROFIRST	1	12.07.2008	0.00			00:00:00	00:00:00
5	2		12.07.2008	99	Info	2	12.07.2008	0.00			00:00:00	00:00:00

Pos	Article	Lib.PC: (Unit)	Operation	Quantity	Unit price net	Total net	Locked	Material	Type	Thick.	Ordered	To out	Unit price net	Sheets	Unit price net	Format	Customer
1	1	KEEP/Plate-Ex02	1	40	3.07	122.80		Edektahl	1.4301	2			0.66	1	2.41	3000X1500	Very New Customer G
2	2	Recheck	-1	1	6.33	6.33		Stahl	S235	2			0.24	1	0.34	3000X1500	Very New Customer G
3	3	Zuschliff	1	1	8.10	8.10		Stahl	S235	2			0.62	1	1.73	3000X1500	Very New Customer G

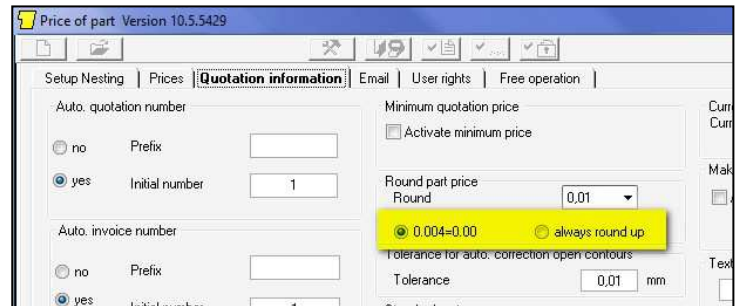
Database path for export/report: C:\Temp\TTPBackUp\ Search Export selected quotation Import quotations

Display quotations: 5 N quotations: 0 % orders: 0 %

Copy compound article to current quotation Show details (click to copy article) Reload quote 5 Open/Copy quote Quote ordered 5 Print quote 5 Delete quote 5 Display all settings Close window

***CALC: Rounding prices always up to nearest cent for operations***

Operations like programming costs often can be rounded down to €0,00. Now you can set the rounding so that we always round up to the nearest cent.



***CALC: Ask is parts imported from an existing quotation should be re-nested immediately***

When parts are imported from an existing quotation you are now asked if these parts should be immediately re-nested or if the current (last quoted) price should be used.

***CALC: PDF of letter paper is now stored in the database***

The PDF file containing the letter paper in the quotation software is now also stored in the database. This avoids problems if the paper is somehow no longer accessible on the network.

***CALC: New module to display and print PDF of quotation***

Using this new module we are now completely independent of Adobe PDF Reader for displaying and printing the PDF of the quotation.

***CALC: Improvement : new parts are always displayed at the top in the part screen***

New parts are always displayed so that they are on the visible part of the screen.

***Machine import improved when using SQL database***

When importing a machine file into an SQL database all connected users get a message to inform that the connection will be stopped during import.

***Teamviewer Version 13 and AnyDesk for quick online support***

Teamviewer Version 13 and AnyDesk has been included in PROfirst to ensure fast online support.

***Bend lines are stored correctly in GEO files***

Unfolding of parts with bend lines are correctly stored and read in GEO format.

***Direction of bending is clearly shown using full lines for positive and dashed lines for negative bends***

This makes the unfolding immediately much clearer.