

COSTING



Calculation of sheet metal parts from laser, plasma, gas and waterjet cutting machines. Faster and more accurate than ever before.

A typical laser machine can cut material with a purchasing price of at least 2 million euro per year. You need to know exactly how much material an order is going to use. PROfirst has a revolutionary new way of digitalising and nesting customer parts.

Less than 30 seconds to digitalise and nest a part to determine the exact cost of material required for a quotation. Not even your machine programming system is that fast. Paper faxes or files such as DXF / DWG / GEO / JPG or PDFs are digitalised and nested without any CAD drafting knowledge.

Price of part Quotation: 89 Customer: MUSTERFIRMA Machining time: 14:30:20 Total time: 27:38:54 Margin Gross: 28.8% Margin Net: ...

Position: 7 Article: Laserzuschnitt-n125689 Description

One time costs per part: None Medium Rotation: yes no Activate assemblies

Cost for bending: Number of folds: 2 Number of setups: 1 Cost: 2,10 €

Cutting length: 2674 Area net: 0,143 m² Weight net: 2,252 kg

Material: stainless steel Density: 7,85 Date: 29.05.2006
Material type: 1.4301 Material price / kg: 2,70 €
Thickness: 2 Sheet size: 3000 x 1500
Machine: TRUMPF-3050-5KW STANDARD

Pos	Article	Ref.	Article	Pict	Material type	Thickness	kg	Qty	Part p
9	8	A235-569-4546	1		S235	2	4,414	300	7,57
7	erzuschnitt-n125				1.4301	2	2,252	50	15,7

Transport costs: 90,00 € Total weight: 3641,9 Kg Delivery: 4 Tage Final %: 0,0 % % Cust: 0,0 % Price without transport: 15487,70 € Profit: 1592,94 €

Internal contours: Circle, Rectangle, Oblong

Manufacture: Speed large contour: 7300 mm/min Time per contour: 00:00:05,00
Speed medium contours: 1100 mm/min Time per contour: 00:00:05,00
Speed small contours: 1100 mm/min Time per contour: 00:00:05,00
Marking speed: 3000 mm/min Machine hourly rate: 150,00 €

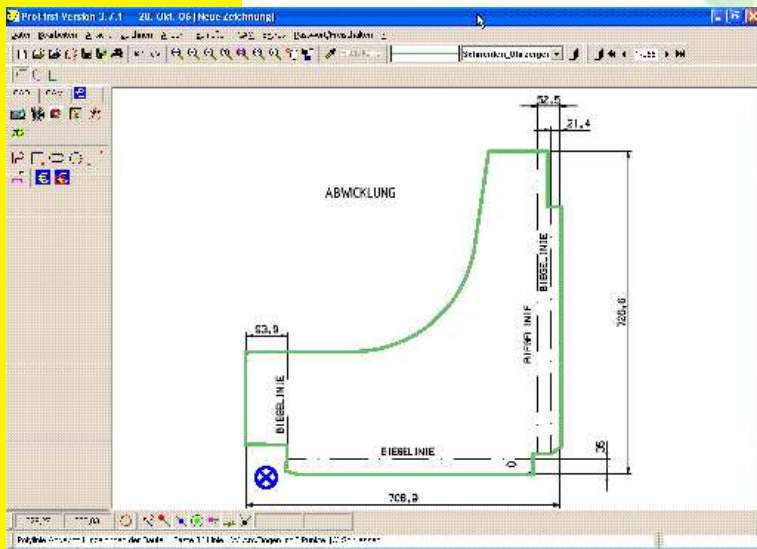
Results: Sheets: 3 Machining cost: 3,5 + margin 15 % = 4,02 €
Pierces: 2 Material price: 10,66 + margin 10 % = 11,73 €
Length lead-in/lead-out: 13 mm Reusable internal waste larger: 0,00 Total cost: 15,75 €
Large contour: 2674 mm Machine time: 00:26:44
Medium contour: 0 mm
Small contour: 0 mm marking: 00:36:56

Scanned and digitalized in 10 seconds

Forget complicated calculation of cutting length and useless outer rectangle nesting

Win more orders because your quotation gets there first

Win more orders with good realistic prices based on precise material calculation



Make precise quotations with all types of requests:

Use any CAD file data directly when available (DXF, DWG, GEO, DSTV, EMF, WMF)

Use any common picture format (PDF, BMP, JPG, TIF, PNG) to digitalise the part.

Make quotes directly from PC fax systems.

Use our camera system to digitalise paper faxes within 2 seconds. Also use any standard scanner with Twain interface.

Fast data entry for standard forms rectangles, circles, oblongs etc. Library of 50 standards parts such as cones, flanges etc.

We supply a complete machine database with all cutting data, speeds, pierce times, small/medium/large contours, foil removal - loading unloading time ...

Multi-head machine are supported perfectly.

We offer a complete system that includes other steps such as bending, programming costs, packaging, drilling, tapping, punching welding, ...

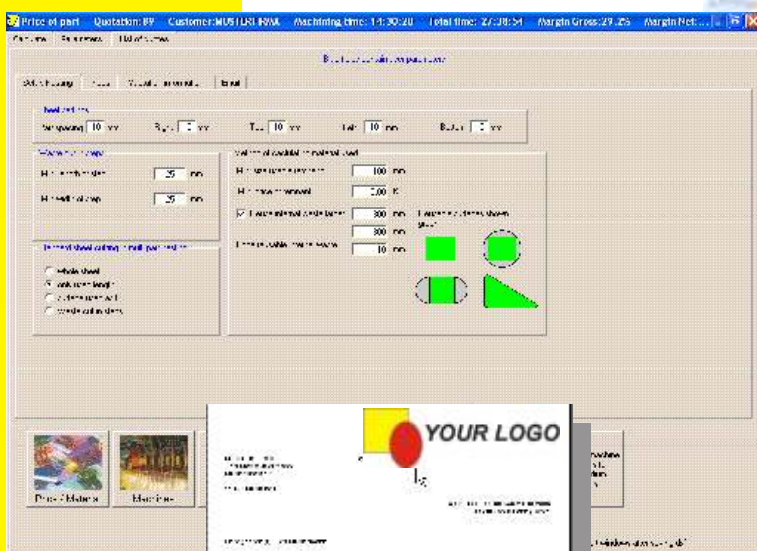
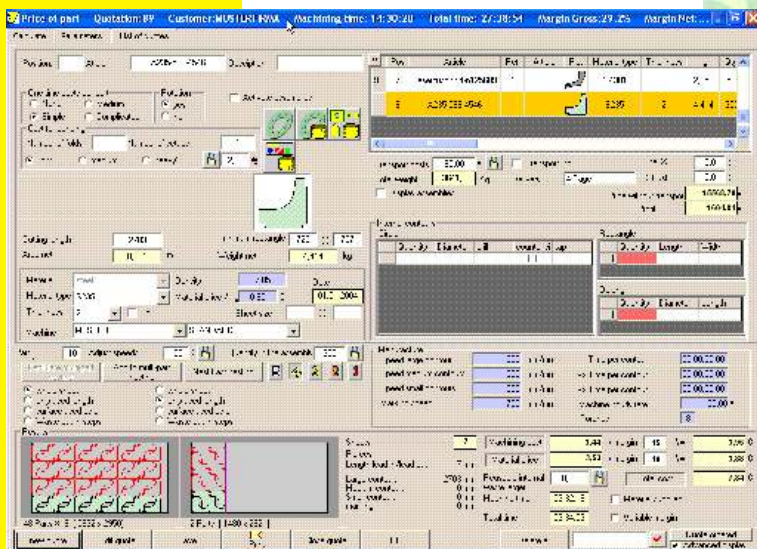
Any other production step can be added such as painting, galvanising,...

Transport costs can be calculated using the exact weight of the parts with transport zones etc.

Large remnants can be taken into account for fairer pricing.

Quotations can then be printed in a freely configurable format and sent directly to the customer as a PDF file with a 1 click Email function.

All data is freely available for export to existing ERP or quotation software.



TOL Computersysteme GmbH
 D-83355 Grabenstätt, Germany
 Tel. +49 8661 98 396-0, Fax -99
www.profirst-group.com
info@tolsoftware.com

