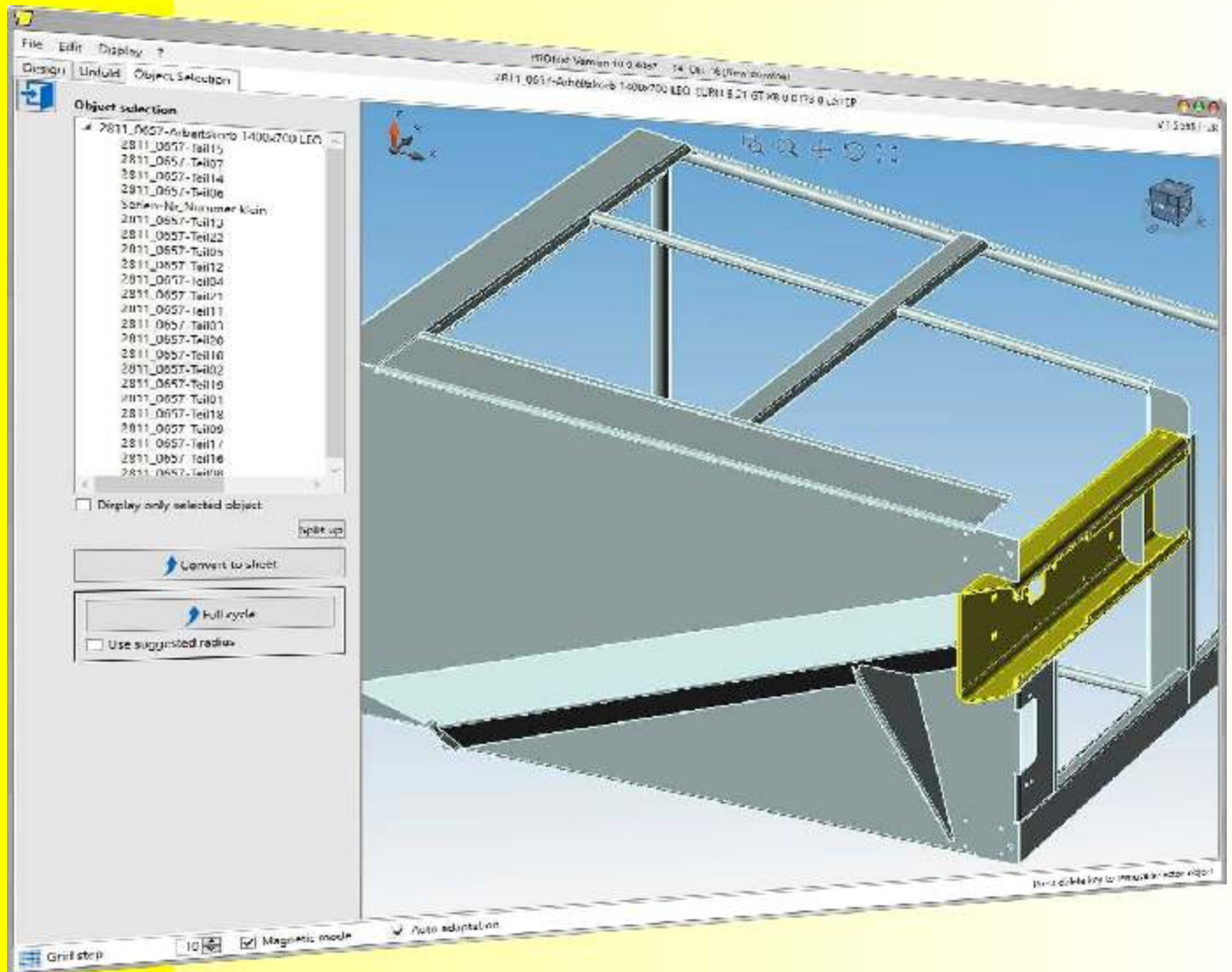


PROfirst 3D-Unfold

PROfirst
CAD / CAM SOFTWARE

3D CAD to design and unfold simple sheet metal parts



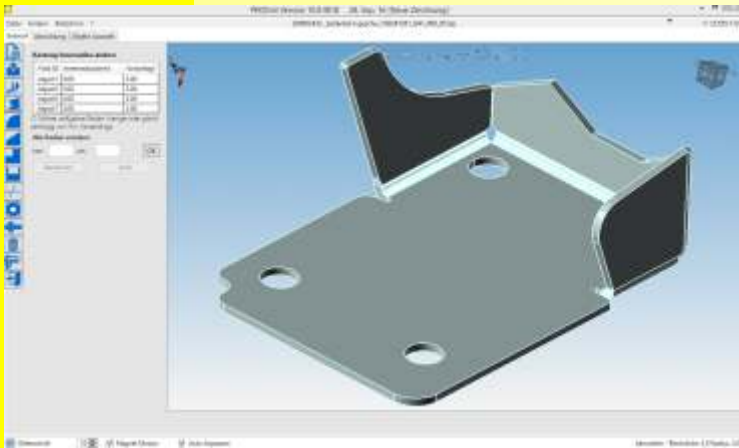
Why use PROfirst 3D-Unfold?

It is fast and really easy to use!
Draw and unfold simple sheet metal parts in less than 2 minutes without days of training.

Save time and money
You don't need to buy and learn complicated 3D CAD software with thousands of functions that you don't need. You can import STEP-files from customers and unfold them quickly

You may already have a 3D-CAD software but is it really quick and easy to use?

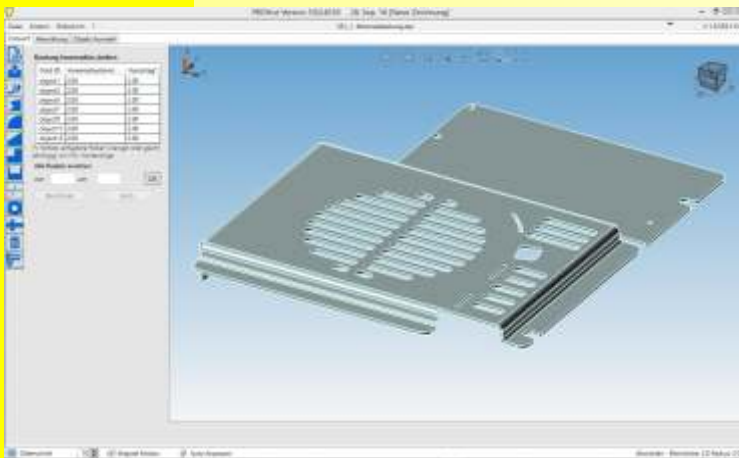
You receive parts and even complete assemblies as STEP files that you need to unfold. No problem!



Your customers expect you to be able to send quick but precise quotations for 3D parts. You don't have the time to ask the technical office to design or unfold the parts just so that you have the size and contour of the unfolded part.

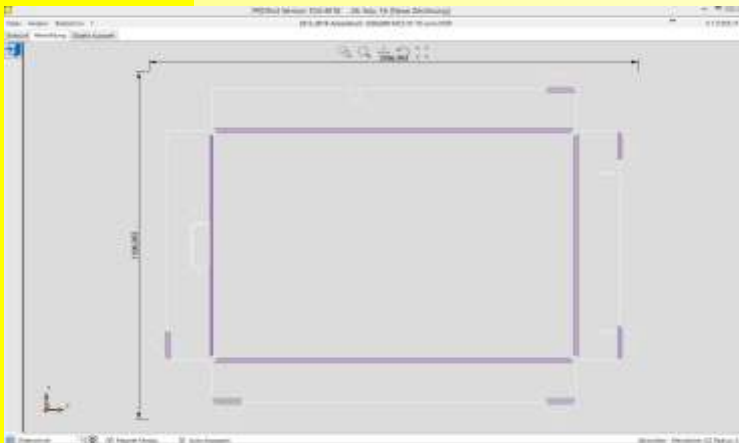
The solution: PROfirst 3D-Undevelop

Even if the STEP files contain complicated assemblies you simply select the desired part and click on convert to sheet metal and unfold.



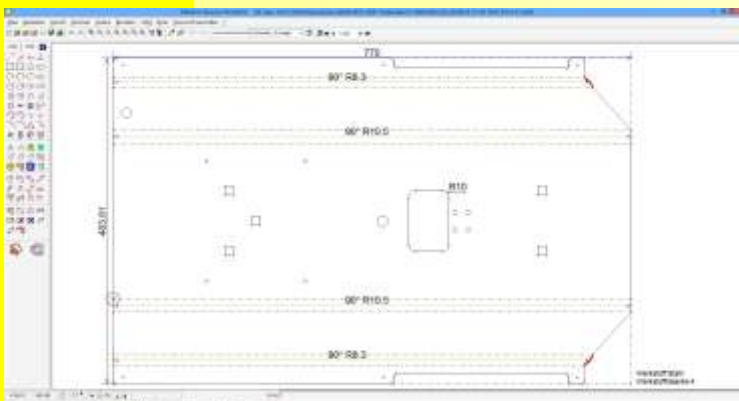
Adjust the part

PROfirst 3D-Undevelop can automatically adjust the bending radius used in the drawing to match that of the bending tools that you have available. This results in really exact dimensions on the part. You can still adjust any radius individually yourself.



Fast and exact unfolding.

The part is unfolded to give you an exact unfolding even if you are not sure about the bend reduction required.



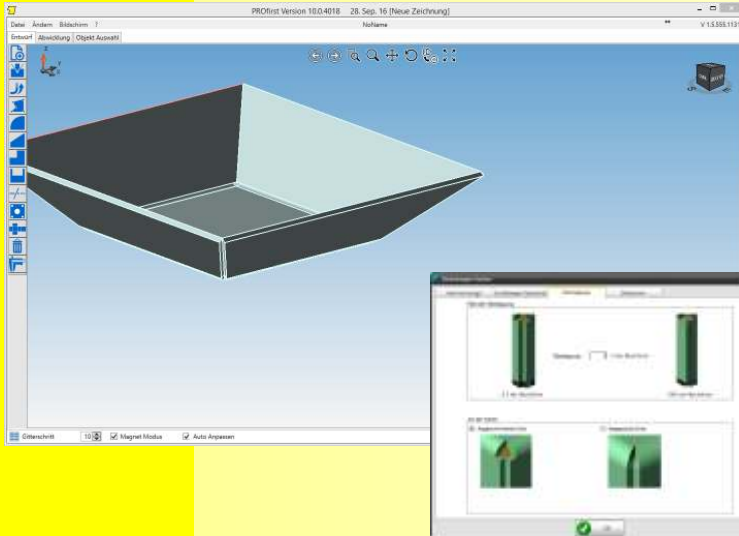
Laser ready DXF is output

A DXF file is produced that is ready to cut. Bends are shown in a special colour. The bend angles and direction are also clearly shown on in the DXF file for the part.

From the idea to the program for the cutting machine, *PROfirst helps you all the way!*

3 ways to works, giving you all the possibilities you need!

PROfirst 3D-unfold has 3 basic operating modes allowing you to make the basic part and then to adjust it with holes, chamfers, rounded corners etc. All options are really easy to find using just a few symbols. The focus has been to keep it nice and easy to use and as quick as possible to learn.

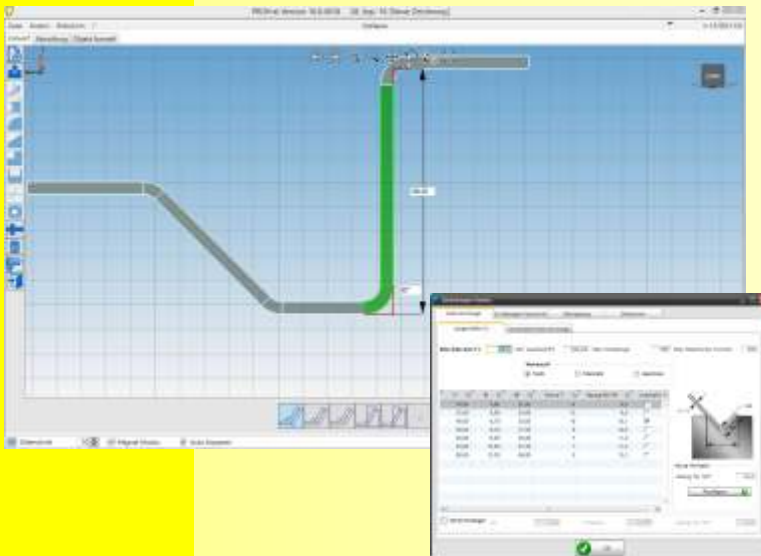


Box mode - Sounds simple, it is!

Draw or import the basic contour of the part and simply pull up the sides with the mouse to the dimensions required. If you have the “auto adjust” option activated the corners on each side are adapted to match.

Setup how the edges match up.

You can define a 100% overlap on one side or no overlap so that you have space to weld. This ensures that the edges match up exactly as you need them.

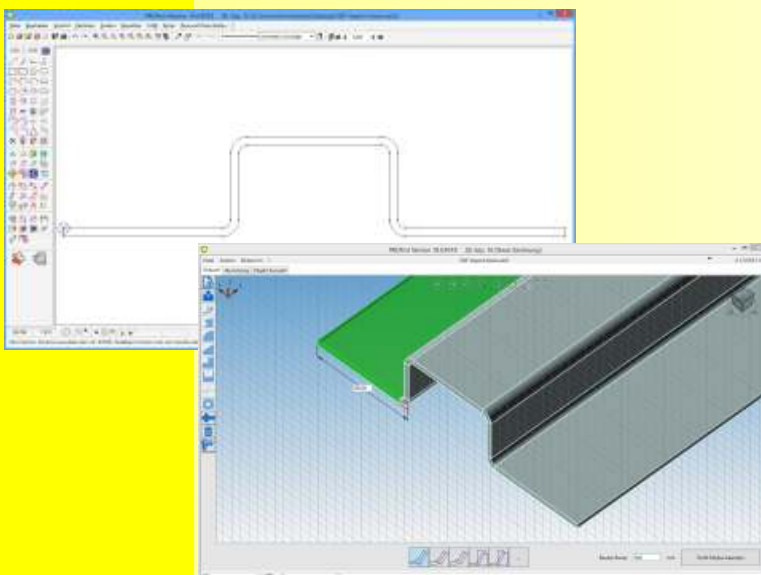


Profile mode

In profile mode you simple draw the side view of the part and define ist depth. Once this is done you have all the normal editing functions to round corners and add holes etc.

Select the bending tool for the job

PROfirst shows you which of your bending tools can be used to make the bend in part. It also stores the correct reduction factor and radius for the bend.

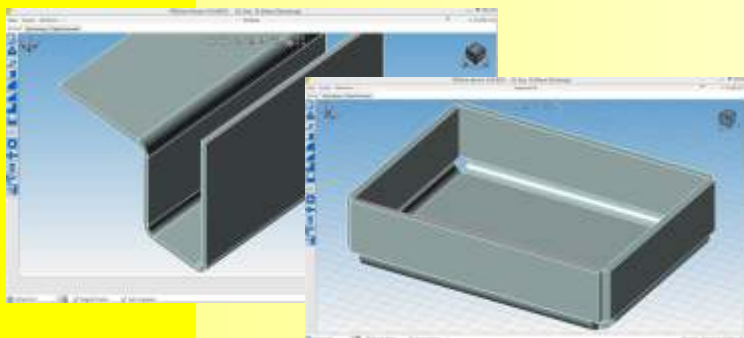


Import DXF mode

This is the easier way to define a part. You can import a DXF which defines the profile of a part in profile mode. You can also import a DXF to define the base of a part in box mode. Once the part is defined it can be edited with the standard edit functions to add holes and round corners etc..

This make designing 3D sheet metal parts as easy as possible.

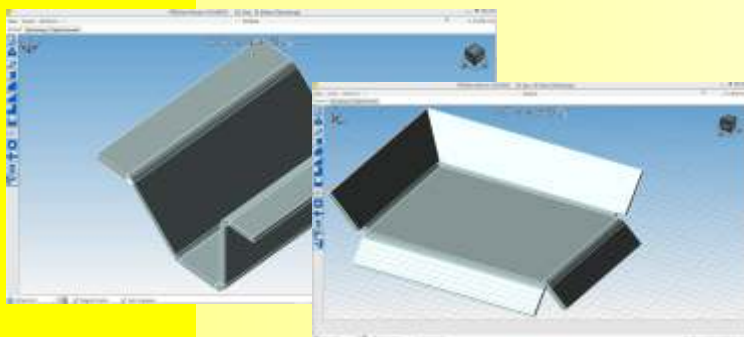
PROfirst 3D-Unfold. The best way to design and unfold simple sheet metal parts!



PROfirst 3D-Unfold 90° comprises:

- 3D construction all angles limited to 90°
- Box and profile modes
- edit functions to add holes, round corners etc
- unfold the parts you have drawn.

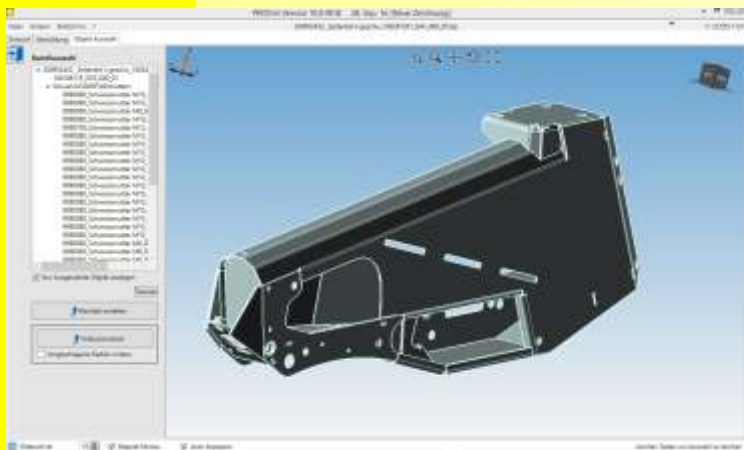
Available in all PROfirst CAD/CAM licences and LogiTRACE Starter Kit.



PROfirst 3D Unfold comprises:

- Same as 3D-Unfold-90° but angles are not limited to 90°.

This module is available in LogiTRACE kit 1



PROfirst 3D-Unfold STEP comprises:

- 3D construction all angles
- Box and profile modes
- edit functions to add holes, round corners etc
- import DXF files to define profiles or base of part
- import STEP and IGES files of parts and assemblies
- unfolding

Available as an option in PROfirst CAD/CAM or LogiTRACE.

Other products ...

LogiTRACE unfolding software for ducting, piping vessels etc

Fast unfolding of standard forms like cones, round to rectangle transitions, segment bends Tees etc with all details needed for the production.

LogiTOLE LogiBARRE

Optimizer software for girders, profiles, tubes or rectangular parts

PROfirst CAM

CAM Software for CNC-cutting machines with excellent automatic nesting

TOL Computersysteme GmbH
D-83355 Grabenstätt, Germany
Tel. +49 8661 21 700-27, Fax -29
www.profirst-group.com
info@tolsoftware.com

PROfirst
CAD / CAM SOFTWARE

